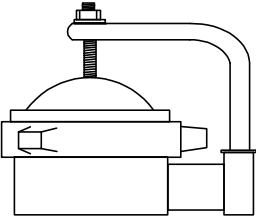
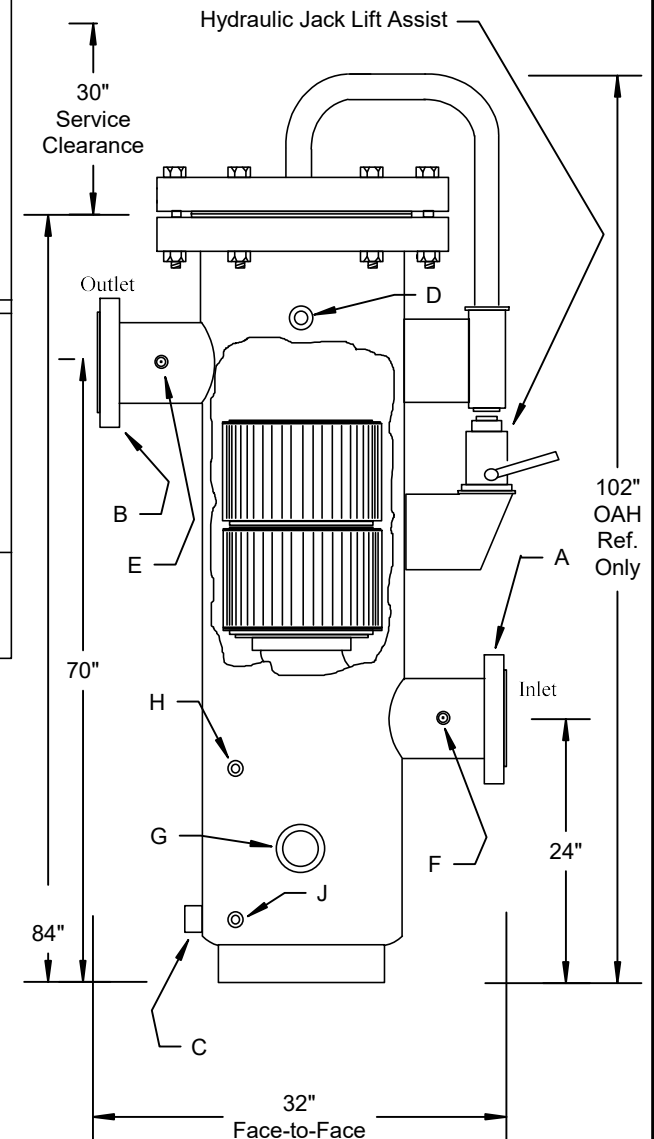
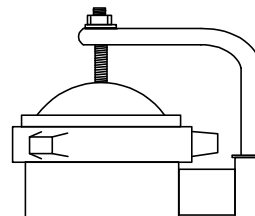


VESSEL DATA SHEET

Design Parameters		Schedule of Openings					
Pressure, Max. at Inlet	1,480 psi	Service	See Dwg.	Qty.	Size	Rating	Type
Temperature	100 F	Inlet	A	1	10"	600# ANSI	Flange
Corrosion Allow.	0.00"	Outlet	B	1	10"	600# ANSI	Flange
Code Standard	ASME Sect. VIII, Div. 1	Drain	C	1	1"	3000#	Coupling
Stamped?	Optional	Vent	D	1	1"	3000#	Coupling
Operating Parameters		Press. Tap	E	1	1/4"	3000#	Coupling
Pressure, Max.	1,480 psi	Press. Tap	F	1	1/4"	3000#	Coupling
Temperature	100 F	Float Switch	G	1	2"	3000#	Coupling
Gas Flow Rate	12.5 MMscfh @ 1,480 psi	Sight Glass	H	1	1/2"	3000#	Coupling
Gas Specific Gravity	0.60	Sight Glass	J	1	1/2"	3000#	Coupling
Vessel Testing		Materials of Construction					
Hydrotest Pressure	2,220 psi	Shell	SA106C			Thickness 1.031"	
Pneumatic Test Pressure	N/A	Bottom Head	SA516-70			1.250"	
Radiograph	Optional with U-Stamp	In/Out Piping	SA106C			0.594"	
Magnetic Particle	Optional with U-Stamp	Flanges	SA105			ANSI 600#	
Dye Penetrant	Optional with U-Stamp	Couplings	SA105			3000#	
Filtration Performance		Closure Gasket	Spiral Wound Gasket				
Filter Element P/N	(2) #2070K907	Ring Base	SA53B			0.188"	
Type of Filter Media	Borosilicate Fiberglass	Shipping Information					
Retention Rating	0.3 micron						
Efficiency of Retention	99.9%						
No. of Elements	1						
Design Clean Press. Drop	0.33 psid						
Changeout Press. Drop	10 psid	Total Weight	4,700#				
Closure Specifications		<div>Optional Threaded Quick Opening Modco Closure</div> 					
Type	Blind Flange						
Gasket Type	Fiber Type, #20-600SW						
Type of Lifting Assistance	Davit Arm						
Internal Finish							
Sandblast	Light						
Oil Coat	None						
Glyptol Coat	None						
External Finish							
Sandblast	SP-10 Commercial						
Finish Coat	(2) Coats PPG Grey Enamel Primer/Finish						
Sump Capacity	29 gallons						

Optional Threaded
Quick Opening
Modco Closure



FilterFab
MANUFACTURING CORPORATION
Model C10-1480F Coalescing Filter